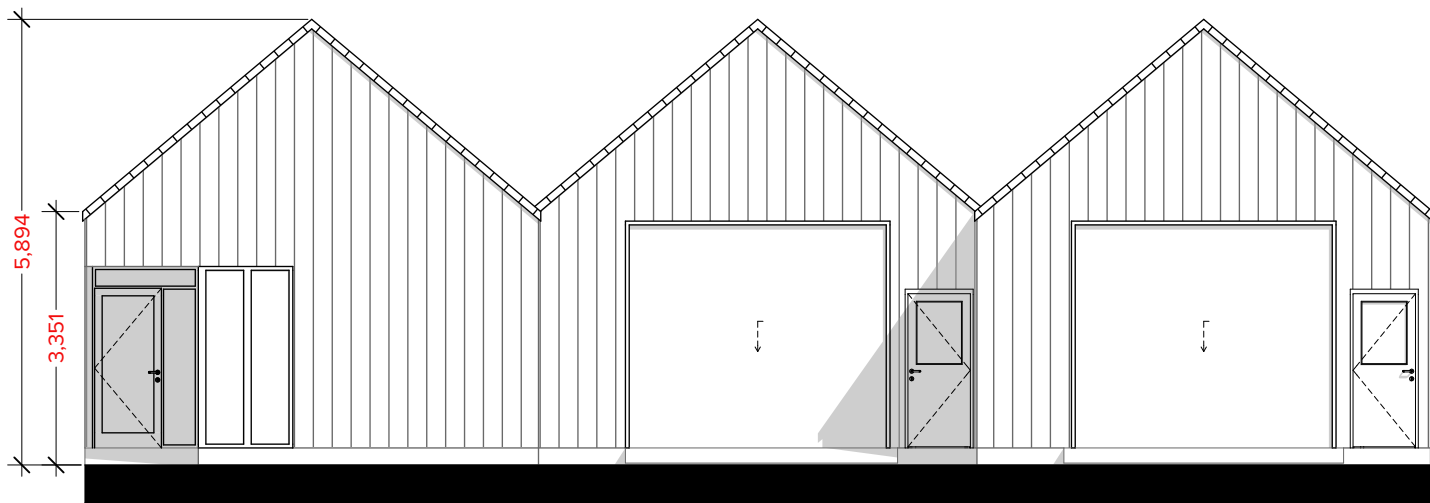


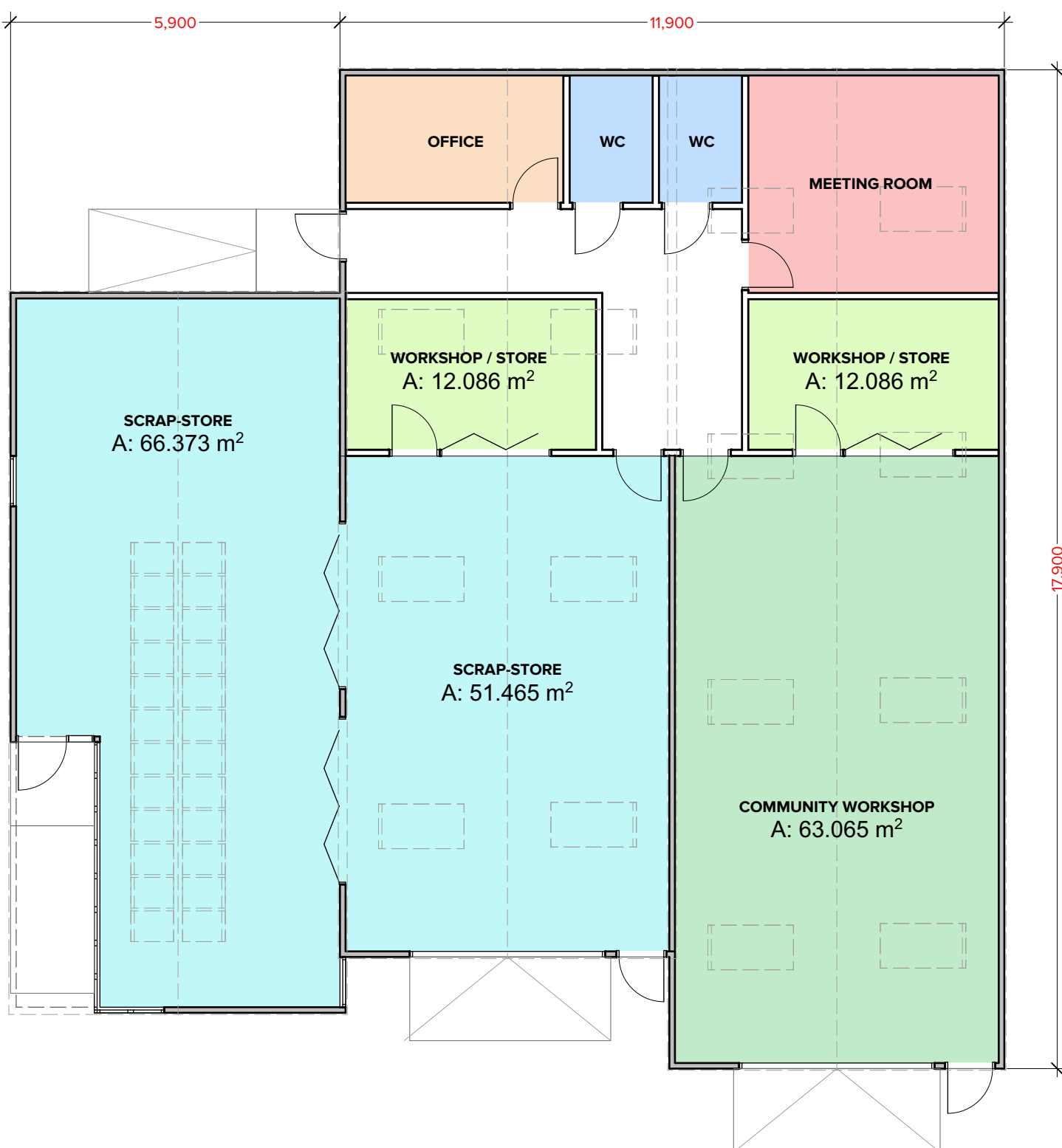
**SCRAP-STORE & COMMUNITY WORKSHOP**

- STEEL PORTAL FRAME / TIMBER STRUCTURE
- MULTI BAY / 40° ROOF PITCH
- PROPRIETARY CLADDING SYSTEM

GEA = 270m<sup>2</sup>

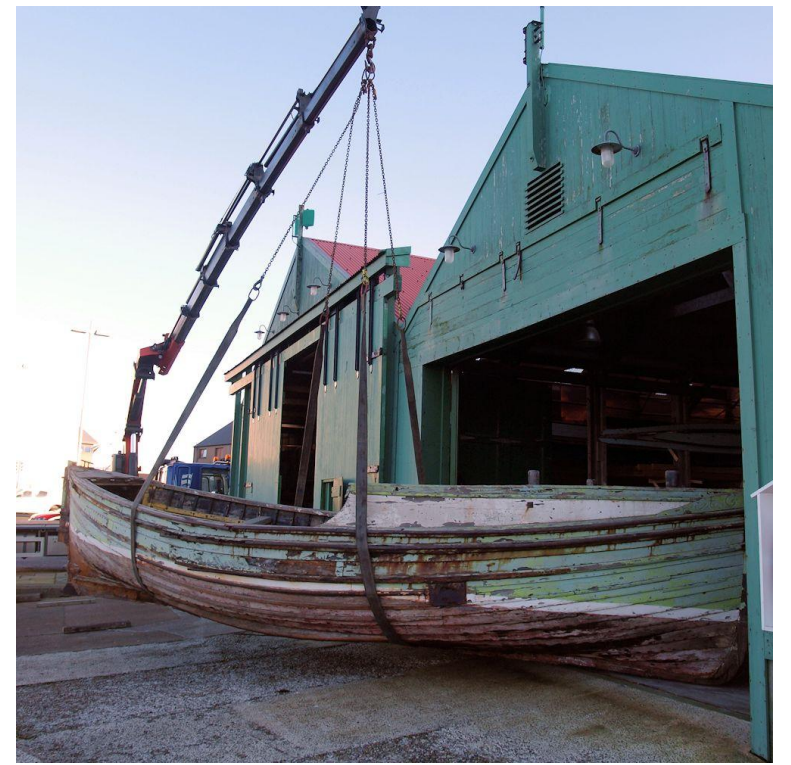


FRONT ELEVATION - OPTION 3  
1: 100



FLOOR PLAN - OPTION 3  
1: 100

SCALE BAR 1:100 @ A2



CLIENT <b>CDCN</b>	
PROJECT <b>AALD SKUL REDEVELOPMENT, NESTING FEASIBILITY STUDY</b>	
DRAWING SCALE(S) @ A2 <b>1:100</b>	DRAWN BY <b>CS</b>
DRAWING NUMBER / REV <b>464/FS/004</b>	DATE <b>JULY 2020</b>
LAYOUT <b>Proposed Scrap-Store &amp; Community Workshop</b>	

**Malcolmson**  
architects

Main Street, Scalloway  
Shetland, ZE1 0TR

01595 880 885  
malcolmsonarchitects.co.uk